



STORMSAFE

Texarkana, TX (205) 960-0838

Residential Storm Shelters

Above Ground Shelters

StormSafe Storm Shelters are compliant with FEMA 320 and are designed by licensed professional engineers and undergo extensive debris impact testing. Each shelter carries the National Storm Shelter Association Seal. Each above ground StormSafe Storm Shelter is constructed with heavy duty steel and engineered to withstand EF5 tornado winds at speeds greater than 250 mph. Features include a powder-coated finish for resistance against rust and corrosion, triple-locking, single lever latching with keyed door handle for extra safety and security.

Twister Pod

- Dimension: 4.3 ft Dia x 6ft H
- Door: 2 ft W x 5 ft H
- Constructed with heavy duty steel
- Durable and strong pipe design
- Welded-in bench seating
- Practical small footprint
- Fits up to 4 occupants
- Can be relocated if moving



Twister Pod Max

- Dimension: 4.8 ft Dia x 6ft H
- Door: 2 ft W x 5 ft H
- Constructed with heavy duty steel
- Durable and strong pipe design
- Welded-in bench seating
- Practical small footprint
- Fits up to 6 occupants
- Can be relocated if moving

Extreme Model

- Available sizes include 4x4 or 4x6
- Multi-use locking bench for storage and seating
- ADA accessible in-swing door (4x6 only)
- Built-in escape hatch
- ¼" steel body for ultimate strength against EF-5 tornado conditions
- Commercial grade door
- Additional stainless bolts installed for
- 4x4 model fits up to 5 occupants
- 4x6 model fits up to 8 occupants



Underground Shelters

StormSafe underground shelters are ideal for families or small businesses. Our shelters are finished with a powder-coat finish to protect against rust and corrosion and constructed using 10-gauge steel for superior strength. Each underground unit can be installed within a few hours and will provide a lifetime of security when tornadic weather and strong wind storms occur..

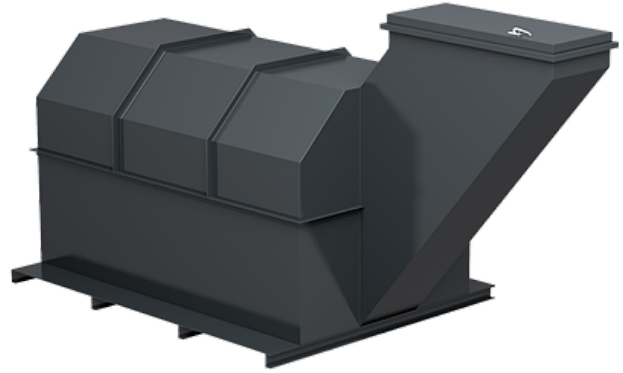
Estate Shelter

- Dimensions: 5x6
- Fits up to 10 occupants
- Double-welded for watertight seal
- Pressure tested to ensure no leaks
- Gasketed door with spring-loaded assists for easy opening and closing
- Perimeter steel bench seating
- Plumbing and electrical hookups



Max Model Shelter

- Dimensions: 10x6
- Fits up to 18 occupants
- Double-welded for watertight seal
- Pressure tested to ensure no leaks
- Gasketed door with spring-loaded assists for easy opening and closing
- Perimeter steel bench seating
- Plumbing and electrical hookups



Garagecube

- Dimensions: 4x8
- Fits up to 10 occupants
- Mounts flush with garage floor
- Double-welded for watertight seal
- Removable steel steps
- Removable assist handle for a safe entry and exit
- Over 10,000 pounds of holding capacity
- 4,000lb winch included to open door if blocked by debris

